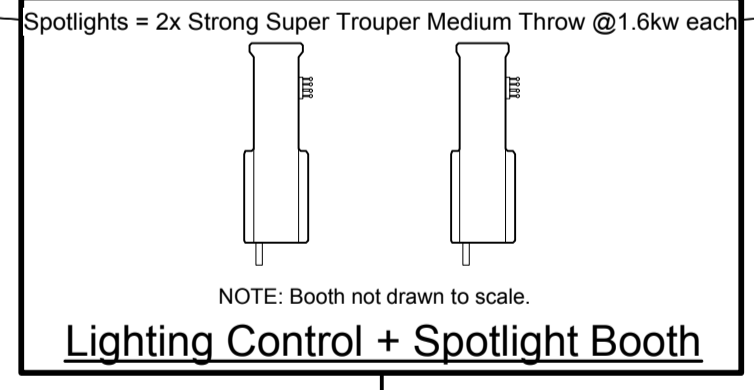
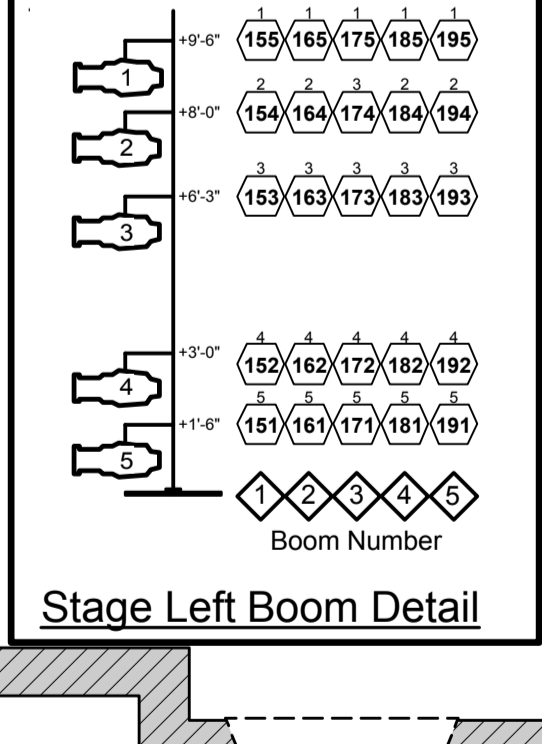
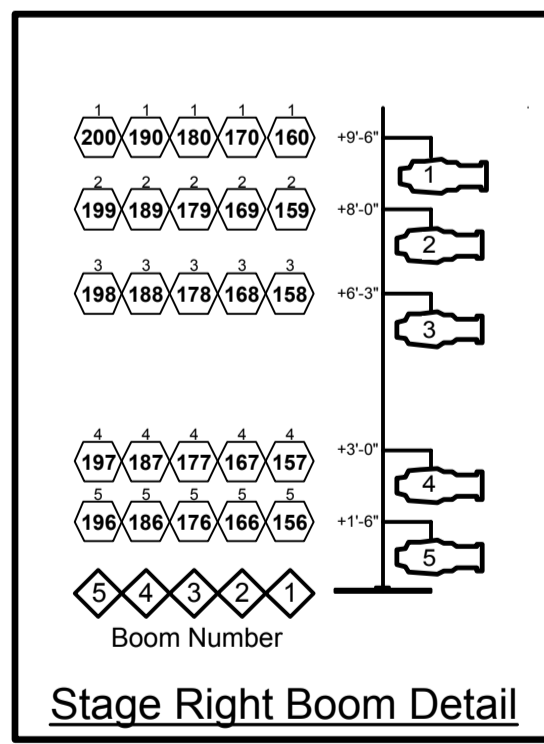


Line Set	Description	Distance from Plaster Line	Time From Deck
29	Bounce Drop	28'-2"	0'-0"
28	LX Cable	27'-5"	
27	#5 Electric	25'-10"	24'-6"
26	Cyclorama	25'-0"	0'-0"
25	Black Scrim	24'-3"	0'-0"
24	Traveler #2	20'-3"	0'-0"
23	#4 Electric	19'-7"	30'-0"
22	Border #4	18'-11"	29'-0"
21	Border #3	18'-3"	
20	Border #2	17'-7"	
19	Leg #2	16'-11"	
18	Leg #1	16'-3"	
17	#3 Electric	15'-7"	27'-3"
16	Border #1	14'-11"	
15	Screen	8'-0"	
6	DS Traveler	6'-7"	0'-0"
4	#1 Electric	3'-6"	25'-9"
3	Border #1	4'-2"	
2	Border #1	4'-2"	
1	Border #1	2'-6"	25'-9"
HC	House Curt.	1'-11"	0'-0"
P2	Tormentor	1'-4"	
P1	Tormentor	1'-0"	
V2	Valance	0'-8"	22'-0"
V1	Valance	0'-3"	27'-6"

NOTE: Shaded Blocks are Deadhang



**NOTES:**  
 UNITS MARKED "PERM. REP" ARE ARCHITECTURAL UNITS THAT MAY NOT BE MOVED.  
 BOOMS AND GROUND ROW NOT ALWAYS INSTALLED. MUST BE SPECIFIED FOR USE.

KEY:	
	ETC Source4 36° -750w
	ETC Source4 26° -750w
	ETC Source4 19° -750w
	ETC Source4 10° -750w
	ETC Source4 15-30° -750w
	ETC Source4 25-50° -750w
	ETC Source4 PAR WFL -750w
	ETC Source4 PAR MFL -750w
	ETC Source4 PAR NSP -750w
	Altman PAR56 MFL Worklight -500w
	ETC Selador Vivid-R

LEGEND:	
	TEMPLATE
	INSTRUMENT TYPE
	DROP-IN IRIS
	INSTRUMENT NUMBER
	CHANNEL
	SIDEARM

**Skirball Theatre**  
 60 Washington Square South New York, New York 10003  
**REPERTORY LIGHT PLOT**  
 SCALE: 1/4"=1'-0" PLATE: 1 of  
 Date: 05/08/03 Revision: 08/22/0